

The Industry Leader in
Alkaline Water Ionizer Technology

NON-ELECTRIC MINERAL WATER PURIFIER



Direct Tap water Filtering system
Built-in Water Flow Control Valve system
Stylish & Easy Usage
Clean Purified & Mineral Water
Various Mineral Filter selection

NON-ELECTRIC MINERAL WATER PURIFIER USER MANUAL

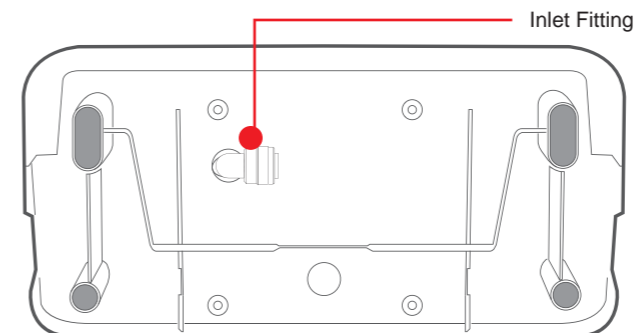
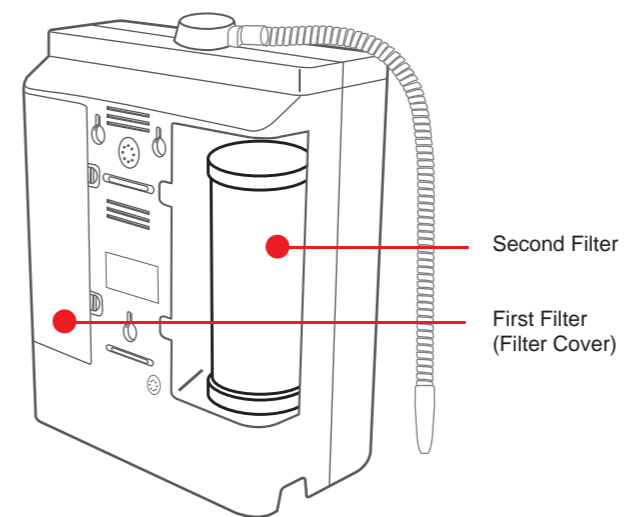


Before installation or operation of the ALKALINE WATER IONIZER, read this instruction manual completely.
Note-Some parts may have been altered to improve product quality function or ease of use.

Table of Contents

Safety Guide	02
Parts of the unit	03
Installation to Faucet(Counter top)	04
Installation Direct to Cold Water Line	05
Operation Method	06
Internal Filter Replacement	06
Filter Composition	07
Common Problems and Solutions	08
Product Specifications	09
Limited Warranty Information	10

Parts of the Unit



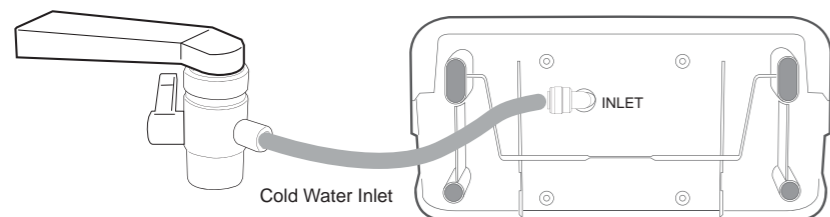
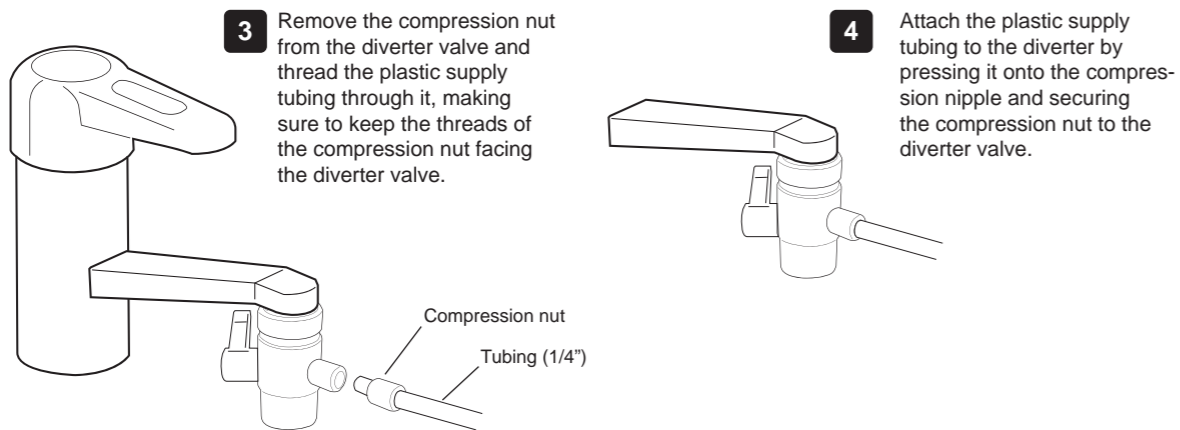
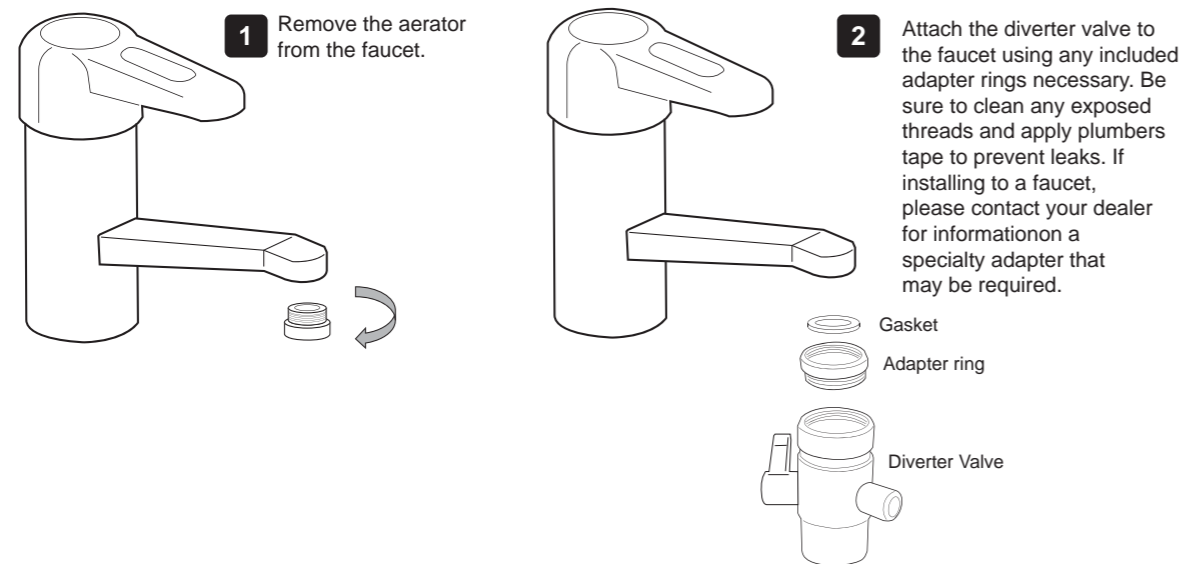
Installation Parts Guide



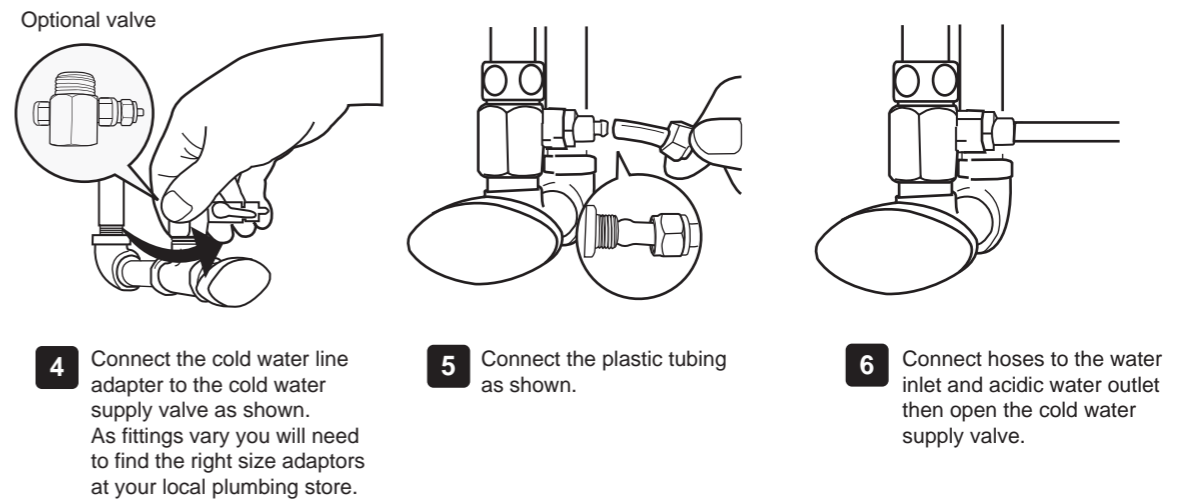
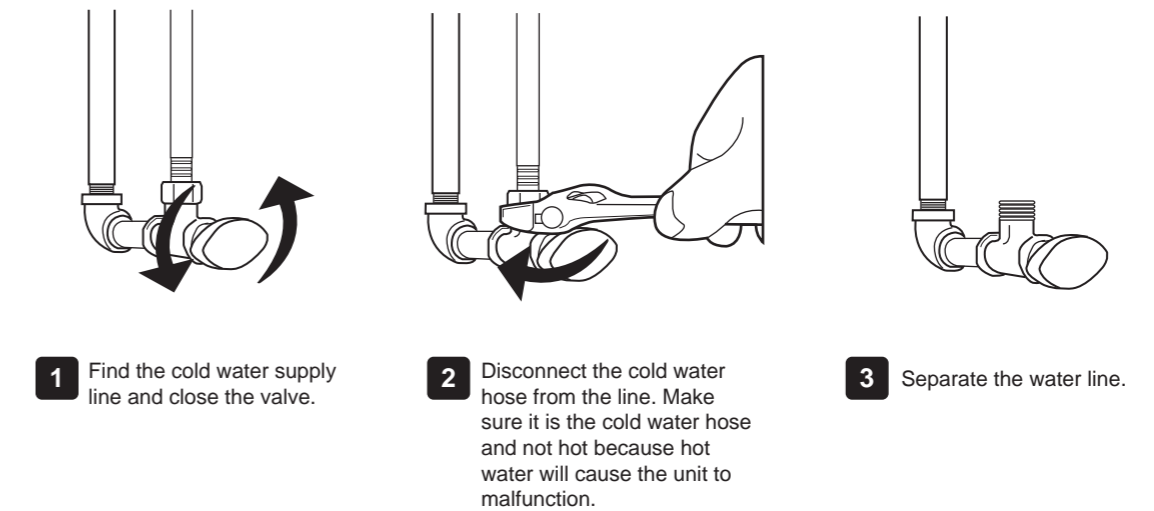
Safety Guide - Read Completely

- This machine should not be repaired or otherwise disassembled by any unauthorized person will void the manufacturer's warranty.
- Do not place the machine in humid areas such as bathrooms. Do not clean this machine by spraying the ionizer with water.
- Place machine in an upright position only.
- Do not install this unit in direct sunlight or near a heater, fireplace or other heat source.
- Do not use water with a temperature of over 95 degrees Fahrenheit or 35 degrees Celcius.
- If wall mounted, secure firmly and correctly.
- If not used for several days, run water through the unit for 1 to 3 minutes before starting.
- Do not block the water passage or tubing.
- Do not use benzene, thinner, or chemicals to clean the unit as it can damage the housing.

Installation to Faucet (Counter top)



Installation Direct to Cold Water Line

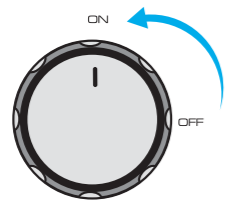


⚠ CAUTION

- Be sure the valves are all connected tightly to prevent leakage.
- Be sure of where you want to install the ionizer as a hole needs to be drilled through the sink top to thread the tube.
- Be sure you connect the unit to cold water as hot water can damage the unit.
- This is a good time to double check and make sure all your fittings are tight and the tubing is secure in the fittings.
- Check daily for any leaks during the first week after installation and check for leaks occasionally thereafter.

Operation Method

Water Supply Valve

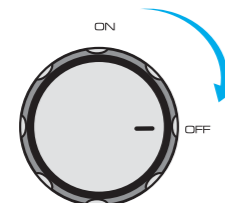


ON



Set the water supply valve to the "ON" position. Then Purified (Filtered) water comes out from Flexible steel hose.

Water Supply Valve

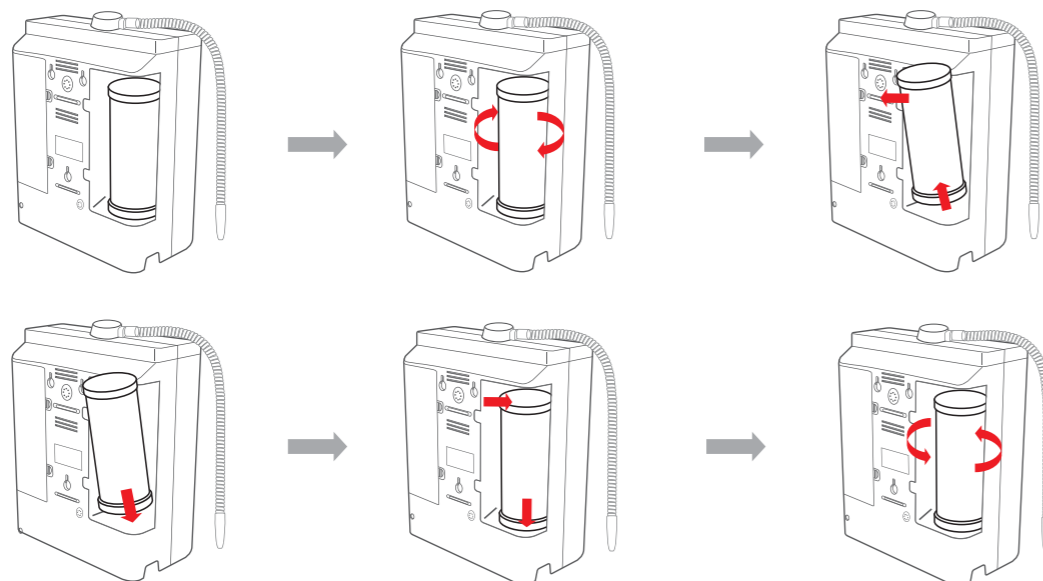


OFF



To STOP water, set the water supply valve to the "OFF" position.

Operation Method



Tips After Filter Replacement

Before using the filtered water as drinking water, let the water flow for at least 3~5 minutes.

Filter Composition



Tourmaline

Tourmaline emits Far Infra Red (FIR) energy naturally. FIR produces well documented health benefits and it also has an amazing effect on water. The Biostone contains the semi -precious gemstone tourmaline in ceramic form, so you get FIR on tap!

Vitamin Ball (remove chlorine)

Slightly increases the alkaline mineral content of your water and improves the taste of water. Helps also to eliminate chlorine.

Granular Activated Carbon (GAC)

The workhorse of the filtration media. GAC is especially effective at removing chlorine, its odor and taste, agricultural chemicals, phenol, trihalomethane and other chemical contaminants. Silver is coated on the surface of the granular activated carbon to inhibit bacterial growth in between use.

Fiber Filter

Filters out rust and other large particulate matter from water.

Common Problems and Solutions

Condition	Possible Problem	Solutions
<ul style="list-style-type: none"> Water volume is low or doesn't come out of the unit. 	<ul style="list-style-type: none"> Angle Valve Adapter and/or cold water supply are turned off. One or more of the water supply tubes is crimped. House water pressure is too low. Pre-filter and/or unit filters are blocked. 	<ul style="list-style-type: none"> Make sure all water supply valves are open. Check all hoses and tubes. Water pressure may be low for many reasons (RO system, sprinkler system, etc) Call your dealer support for assistance. If unit has been used for 6 months or more, replace filters as needed.
<ul style="list-style-type: none"> Tubing is leaking. 	<ul style="list-style-type: none"> Tube is not seated properly or there is a hole in the tubing. 	<ul style="list-style-type: none"> Disconnect and reconnect tubing making sure it is seated 3/4 inch deep or replace tubing.
<ul style="list-style-type: none"> Pre-filter is leaking. 	<ul style="list-style-type: none"> Tubing to pre-filter is not seated deeply enough. O-Rings inside the pre-filter are not seated correctly or are being crimped due to housing cover being on too tight. 	<ul style="list-style-type: none"> Disconnect and reseal tubing at least 3/4 inches into filter. Disconnect tubing and unscrew housing cover. Make sure O-Rings are seated properly.
<ul style="list-style-type: none"> Water has an unpleasant odor or taste. 	<ul style="list-style-type: none"> The internal filters may need to be replaced. Water source requires a pre-filter or RO filter. 	<ul style="list-style-type: none"> Call your dealer to place an order for new filters. Call your dealer for a water quality report for your area.
<ul style="list-style-type: none"> Unit is making an unusual noise. 	<ul style="list-style-type: none"> The problem is internal and requires a qualified technician. 	<ul style="list-style-type: none"> Call to Technical Support.
<ul style="list-style-type: none"> Ionizer is leaking. 	<ul style="list-style-type: none"> The problem is internal and requires a qualified technician. 	<ul style="list-style-type: none"> Call to Technical Support.

Product Specifications

Product Type	Water Purifier (Non-Electric)
Model Name	PRIME PURIIM WATER IONIZER
Dimensions	30cm X 34.7cm X 15cm
Unit Weight	3.0 Kg
Maximum Water Supply Pressure	90 psi
Applicable Water Temperature	5~30 degree (41~86 F)
Flow Control	Manual Valve
Filter Number	Dual Filter (2 Filters)
Filter Replacement	Cartridge
Filter Life	6 Month (20 Liters / 1 day)
Filter Composition	Activated Carbon, Vitamin ball, Fiber Filter, Ceramic Ball



Limited Warranty Information

MEMO

This warranty is extended only to the original purchaser

Congratulations on your new purchase!

- TODAY'S DATE :
 - NAME :
 - ADDRESS :
 - CITY :
 - STATE :
 - DATE OF PURCHASE :
 - MODEL & SERIAL NUMBER :
 - CONTACT PHONE NUMBER :
 - DEALER PURCHASED FROM :
-

This warranty only covers failures due to defects in materials and workmanship which occur during normal use.

This warranty does not cover damage which occurs in return shipment, failures which are caused by products not supplied by the warrantor, damage due to mineral build-up, failures which result from accident, misuse, abuse, neglect, mishandling, faulty installation, misapplication, improper insertion of consumables, set-up adjustments, maladjustment of consumer controls, improper operation or maintenance, alteration, modification, power line surge, improper voltage supply, commercial use, or service by another other than an authorized repair facility.

Limits & Exclusions

There are no express warranties except as listed above.

The warrantor is not responsible for incidental or consequential damage; for damages arising out of the use of any unauthorized attachment; or for damages arising out of the product with a defective water faucet.

This warranty does not cover repairs caused by customer neglect or by failure to stop the mineral build-up such as calcium in hard water areas.